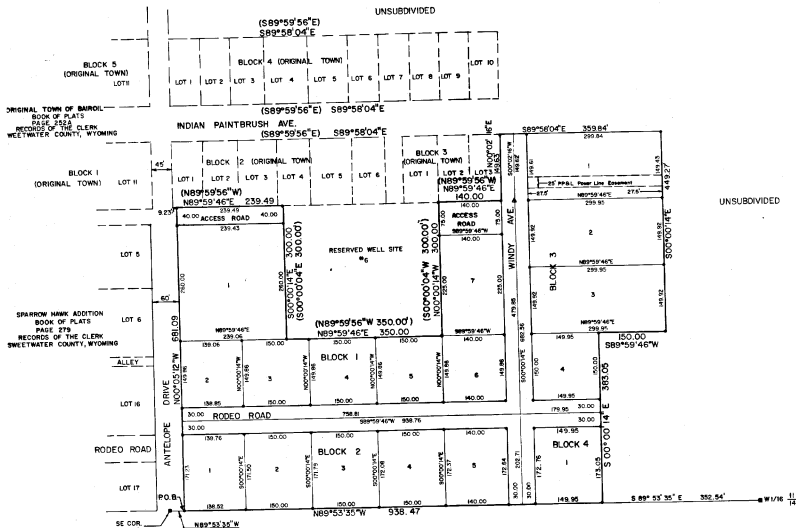
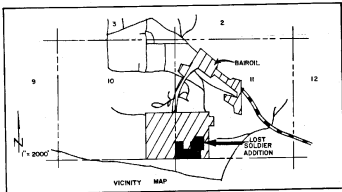


FINAL PLAT
LOST SOLDIER ADDITION
to the
TOWN OF BAIROL, WYOMING
In the SW1/4, SW1/4 of Sec. 11, T26N, R90W,
of the 6th PM, Sweetwater County, WY

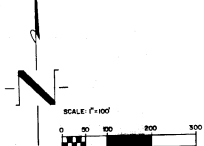


UNSUBDIVIDED

LEGEND

• 5/8" REBAR & ALUMINUM CAP

NOTE:
(N89°59'56"W)-RECORD BEARING
N89°59'46"E = THIS SURVEY



DEDICATION

KNOW ALL MEN BY THESE PRESENTS, that the undersigned owners and proprietors of the land shown on this plat hereby certify that the LOST SOLDIER ADDITION to the TOWN OF BAIROL, WYOMING, is located in the SW 1/4 SW 1/4 of Section 11, T26N, R90W 6th PM, Sweetwater County, Wyoming, more particularly described as follows:

"Beginning at the SE corner of the Sparrow Hook Addition to the Town of Bairol, Wyoming, and which is on the South line of Section 11, which bears S89°59'30" W, 300.00' from the SE corner of Section 10, T26N, R90W, 6th PM, ...
Thence N00°00'00" W, along the East Right-of-Way of Antelope Drive and the East side of the Sparrow Hook Addition, a distance of 460.00' to a point on the South line of Block 2 of the Original Town of Bairol, Wyoming, which bears N89°59'46" E (Original Town Record-N89°59'50" E), 9.72' from the SW corner of said Block 2;
Thence S89°59'46" E, Original Town Record-N89°59'50" E, along the South line of said Block 2, a distance of 238.85' to a point;
Thence S00°00'00" E, a distance of 300.00' to a point;
Thence N89°59'46" E, a distance of 300.00' to a point;
Thence N00°00'00" W, a distance of 300.00' to a point on the South line of Block 4 of the Original Town of Bairol, Wyoming;
Thence N89°59'46" E (Original Town Record-N89°59'50" E), along the South line of said Block 3, 140.00' to the SE corner of said Block 3;
Thence N00°00'00" E (Original Town Record-N00°00'00" W), along the East line of said Block 3, a distance of 148.83';
Thence S89°59'46" E, a distance of 300.00' to a point;
Thence S00°00'00" E, a distance of 448.27' to a point;
Thence S89°59'46" W, a distance of 150.00' to a point;

Thence S00°00'00" E, a distance of 383.00' to a point on the South Line of corner between Sections 9 and 14 of T26N, R90W, 6th PM.
Thence S89°59'55" W, a distance of 136.47' along the South Line of said Section 11 to the pole of beginning, and thence, opening 1.538 acres, more or less.
A 20' Easement is hereby granted to Pacific Power & Light Company for a power line to show on this plat. PUBLIC UTILITY EASEMENTS (PUE) areas shown elsewhere shall be 5 feet in width on each side of common property lines, 5 feet in width along the great ends of lots, 10 feet in width along the back lots to them, and the Public Utility Easements shall be used for their purpose only.

That the surveying and laying out in Blocks, Lots, Alloys, Easements and Street layout at Lost Soldier Addition to the Town of Bairol, Sweetwater County, Wyoming, is with free consent and in accordance with the desires of the undersigned owners and proprietors.

That they are the owners hereof and that they do hereby dedicate to the public use said Streets, Alloys and Easements they wish for foregoing plat.

In WITNESS WHEREOF, the said owners and proprietors have hereunto set their hands and seals this 28th day of July, 1924.

Witness my hand and official seal.

My Commission expires June 27, 1924

This plat approved by the Town Council of Bairol, Wyoming, this 28th day of July, 1924, for filing with the Clerk and Recorder of Sweetwater County and for the public dedications shown herein, subject to the provisions that appear in the plat hereto filed with the Clerk and Recorder of Sweetwater County, Wyoming, on the 28th day of July, 1924, for the purpose of improvements on lands, streets, or easements dedicated to the public.

Dated the 28th day of July, 1924
Town of Bairol, Wyoming
By: Cindy Jean Battlett
Mayor

Attest:
Dorcas A. Atkinson
Town Clerk

SURVEYOR'S CERTIFICATE

I, MARTIN A. PEDERSEN, OF RAWLINS, WYOMING, DO HEREBY CERTIFY THAT THE PLAT WAS DRAWN FROM NOTES TAKEN ON A SURVEY MADE UNDER MY SUPERVISION BY LEO LEONARD MARCH AND APRIL, 1924, AND THAT IT CORRECTLY REPRESENTS THE RESULTS OF THAT SURVEY AS ACCURATELY STAKED OUT AND MARKED ON THE GROUND.

SUBSCRIBED AND SWORN TO BEFORE ME BY MARTIN A. PEDERSEN THIS 30th day of July, 1924.

My Commission Expires February 7, 1926



RECORDERS CERTIFICATE

I, Clerk of said County, do hereby certify that the plat described, certified and attested, County Clerk and Executive Trustee of Bairol, and for Sweetwater County, Wyoming, do hereby certify that this map was filed in my office in Bairol, Sweetwater County, Wyoming, on the 28th day of July, 1924, and was recorded in Book 212, at page 212, instrument Number 21274 of 18730 6th PM.

Clerk of Sweetwater County, Wyoming
By: [Signature]