

GLENARMS ADDITION, FILING NO. TWO

A SUBDIVISION IN THE TOWN OF GREEN RIVER, WYOMING

REV. NO.	DELTA	BADIUS	TANGENT	LENGTH	CHORD
1	6°10'00"	330.00	17.29	34.96	34.94
2	38°52'00"	330.00	116.34	229.20	219.85
3	38°52'00"	330.00	188.12	402.74	384.10
4	38°52'00"	330.00	107.07	207.50	203.95
5	2°10'00"	330.00	30.18	42.52	42.29
6	64°52'30"	300.00	189.02	537.34	368.80
7	1°10'00"	300.00	45.00	66.93	66.10
8	18°11'25"	800.00	104.06	206.30	200.50
9	1°10'00"	600.00	169.28	199.80	199.80
10	43°00'00"	507.15	250.00	361.00	352.17
11	9°30'00"	20.00	20.00	31.47	28.98
12	88°11'40"	20.00	17.16	28.98	26.23
13	68°00'00"	80.00	18.01	39.32	36.77
14	10°00'00"	10.00	10.00	14.14	12.65
15	84°18'04"	10.00	11.50	16.52	15.23
16	10°00'00"	20.00	17.37	28.98	26.23
17	67°30'15"	20.00	17.04	28.98	26.23
18	100°18'18"	25.00	22.85	36.84	33.37
19	100°18'18"	25.00	30.15	43.84	38.44
20	27°00'00"	25.00	12.81	35.72	32.50
21	100°30'00"	25.00	31.15	44.72	38.99
22	11°00'00"	25.00	22.95	36.14	32.86
23	4°00'00"	225.00	7.84	15.31	15.70
24	11°00'00"	225.00	3.93	7.65	7.80
25	100°30'00"	225.00	14.35	29.51	29.32
26	9°30'00"	447.95	22.72	55.50	56.32
27	88°18'34"	447.95	19.25	44.40	44.40
28	9°30'00"	275.00	7.20	14.43	14.31
29	88°18'10"	225.00	10.24	18.43	18.31
30	18°18'42"	275.00	23.85	52.29	53.20
31	27°00'00"	150.00	5.35	10.47	10.37
32	148°18'18"	275.00	34.14	67.94	67.76
33	11°00'00"	300.00	64.84	128.01	128.00
34	43°38'38"	300.00	17.28	29.14	29.33
35	2°10'00"	300.00	86.31	121.51	121.56
36	18°42'00"	360.00	36.79	79.57	79.53
37	10°30'18"	360.00	34.48	74.51	74.51
38	2°10'00"	175.00	49.85	80.34	80.34
39	20°00'00"	175.00	33.85	15.09	18.88
40	42°18'12"	80.00	21.85	40.83	40.83
41	10°00'00"	80.00	22.17	41.76	40.53
42	58°24'41"	50.00	28.47	49.67	46.73
43	58°24'41"	125.00	28.48	56.00	52.50
44	9°30'33"	205.00	20.70	51.29	50.74
45	10°18'18"	205.00	20.24	50.53	50.28
46	18°52'00"	200.00	33.32	66.04	65.74
47	18°52'00"	200.00	33.32	66.04	66.00
48	9°00'00"	275.00	14.41	28.90	28.78
49	88°18'34"	275.00	12.38	26.23	26.14
50	18°18'42"	275.00	28.78	57.06	56.87
51	18°18'42"	175.00	4.40	8.91	8.75
52	20°00'00"	175.00	4.40	9.16	9.16
53	37°00'00"	175.00	4.58	9.10	10.00
54	9°00'00"	125.00	5.46	10.91	10.91
55	27°00'00"	125.00	6.00	12.50	12.50
56	30°00'00"	50.00	12.51	21.42	20.70
57	30°00'00"	50.00	12.51	21.42	20.70
58	24°00'00"	50.00	10.43	20.94	20.00
59	18°00'00"	438.00	18.87	36.90	36.90
60	11°30'00"	438.00	43.87	87.51	87.18

NOTE - Dedicated utility easements are as follows unless otherwise indicated:

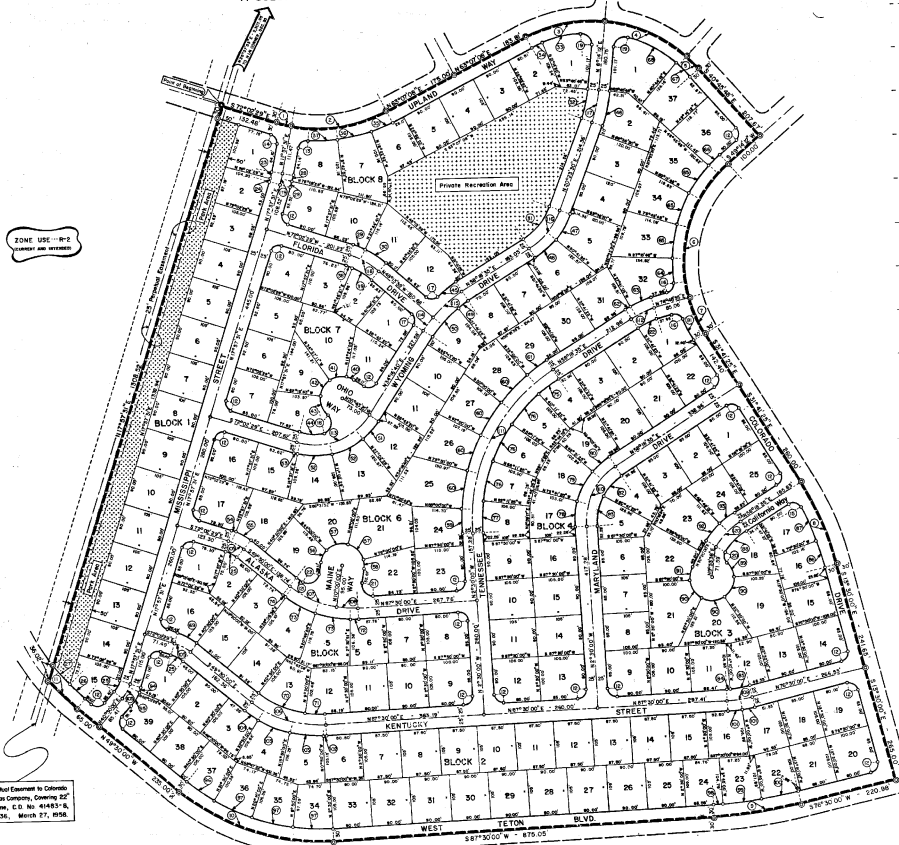
- 1.) 5 feet either side of lot side-lines, and
- 2.) 7.5 feet either side of back-of-lot lines.

OWNER - TEXASGULF, INC.
200 Park Avenue
New York City, NY 10007

RECORDED 1993 JUN 15 10:14 AM
BY REC'D 1993 JUN 15 10:14 AM
55,762.00

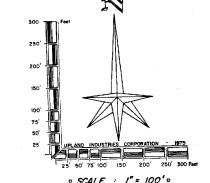
•BASIS OF BEARING - 80°46'24"E ON THE NORTH LINE OF SECTION 35, RESURVEY TOWNSHIP 18 NORTH, RANGE 107 WEST OF THE SIXTH PRINCIPAL MERIDIAN PER INFORMATION OBTAINED FROM NELSON ENGINEERS.

© 2007 Platting Commission in Colorado
Inverness Data Company, Coalinga 227
P.O. Box 144, L.O. #44837-8
P.O. Box 36, March 27, 1958



ZONE USE - P-18
COURTESY AND SERVICES

CURVE NO.	DELTA	BADIUS	TANGENT	LENGTH	CHORD
61	1°10'00"	430.00	27.79	50.50	50.46
62	47°00'00"	225.00	17.87	15.75	15.73
63	121°30'00"	225.00	24.63	48.07	47.84
64	103°32'4"	330.00	30.44	60.71	60.62
65	123°00'00"	225.00	32.17	17.75	17.75
66	6°00'00"	520.00	17.29	54.20	54.24
67	6°30'00"	300.00	24.81	33.79	34.67
68	28°00'00"	300.00	63.93	107.80	108.35
69	37°00'00"	125.00	21.12	42.36	42.36
70	1°00'00"	217.73	22.89	45.67	45.67
71	2°00'00"	250.00	3.00	18.00	18.00
72	1°00'00"	250.00	40.23	79.78	79.44
73	18°17'04"	250.00	40.23	79.78	79.44
74	2°00'00"	250.00	3.00	6.00	6.00
75	1°30'00"	360.00	28.81	57.12	57.00
76	140°00'00"	360.00	34.73	69.28	69.18
77	10°18'35"	360.00	34.73	69.28	69.18
78	18°18'18"	360.00	28.89	57.45	57.45
79	20°10'00"	175.00	30.06	16.87	16.23
80	18°30'00"	175.00	28.89	15.50	15.52
81	9°00'00"	175.00	28.89	15.50	15.52
82	1°40'00"	185.00	3.33	6.00	6.00
83	37°00'00"	275.00	22.85	45.67	45.67
84	1°40'00"	275.00	4.00	8.00	8.00
85	37°00'00"	275.00	22.85	45.67	45.67
86	1°00'00"	620.00	32.49	64.93	64.80
87	1°00'00"	620.00	41.75	83.37	83.37
88	27°00'00"	143.50	33.77	70.11	69.42
89	20°10'00"	80.00	18.48	35.40	34.84
90	8°00'00"	50.00	28.87	52.36	50.00
91	20°10'00"	80.00	17.75	28.60	28.25
92	18°30'47"	183.53	23.94	53.54	53.37
93	12°00'48"	183.53	23.97	53.54	53.37
94	8°00'00"	180.00	4.65	15.09	15.08
95	18°30'48"	225.00	28.17	56.00	55.76
96	8°00'00"	217.73	22.89	45.67	45.67
97	11°00'00"	477.13	47.40	94.50	94.50
98	11°45'00"	1008.00	44.01	21.90	21.90
99	9°00'00"	1008.00	44.01	87.95	87.94
100	11°45'00"	1008.00	41.81	83.57	83.54
101	5°30'00"	320.00	5.61	31.20	31.18
102	18°00'00"	320.00	18.75	37.50	37.50
103	18°42'00"	267.75	39.27	77.88	77.87
104	8°00'00"	267.75	39.27	77.88	77.87
105	37°00'00"	267.75	18.51	35.34	35.34
106	47°00'00"	267.75	18.51	35.34	35.34
107	30°00'00"	225.00	61.94	119.77	118.34
108	12°00'00"	225.00	24.64	49.00	49.00
109	11°00'00"	300.00	38.89	57.60	57.51
110	10°00'00"	150.00	18.00	28.50	28.50
111	112°30'00"	150.00	240.28	435.00	435.00
112	18°30'00"	200.00	29.00	57.60	57.60
113	27°00'00"	150.00	112.38	182.92	178.86
114	17°22'41"	300.00	18.65	30.24	30.87
115	27°00'00"	300.00	43.60	86.95	86.95
116	33°35'00"	175.00	40.12	15.61	15.73
117	14°00'00"	300.00	42.17	83.13	83.33
118	23°00'00"	200.00	28.89	118.17	118.17
119	8°00'00"	280.00	15.10	29.40	29.40
120	27°00'00"	168.00	28.89	57.60	57.60
121	8°00'00"	280.00	8.93	17.86	17.86
122	18°00'00"	175.00	18.00	36.00	36.00



FINAL FILING PLAT
GLENARMS ADDITION, FILING NO. TWO
A SUBDIVISION IN THE TOWN OF GREEN RIVER, WYOMING

2
1
DRAWN, REVISION
4-17-75 1" = 100' DRH RFW